

Bathroom Reform

Create a welcoming and safe environment in every nook and cranny on campus!!





Campus Beautification Subcommittee

- ❑ Improve all facets of student life on campus
- ❑ Create a welcoming and positive stigma on and of campus
- ❑ Create an environment where students feel safe and supported



Bathroom Reform Proposals

- ❑ Cleanliness
- ❑ Accessibility
- ❑ Vape detectors
- ❑ Graffiti & its negative stigma and culture on campus
- ❑ Gender specific and neutral bathroom reforms

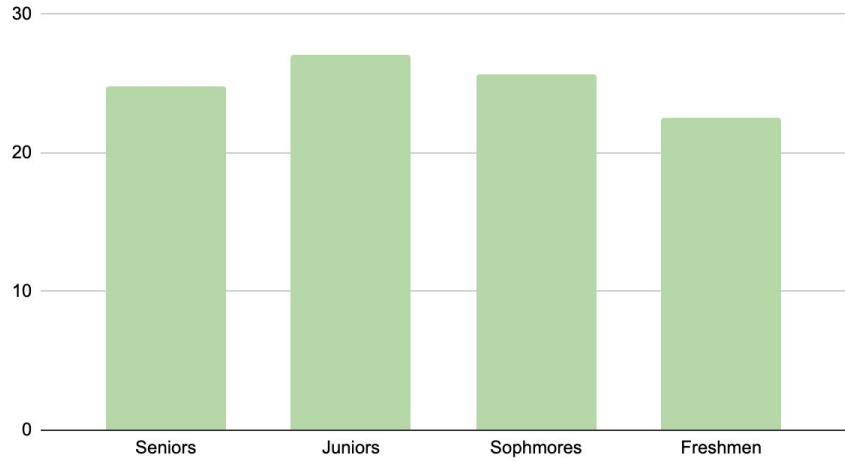


Chair: Aminah Jamal

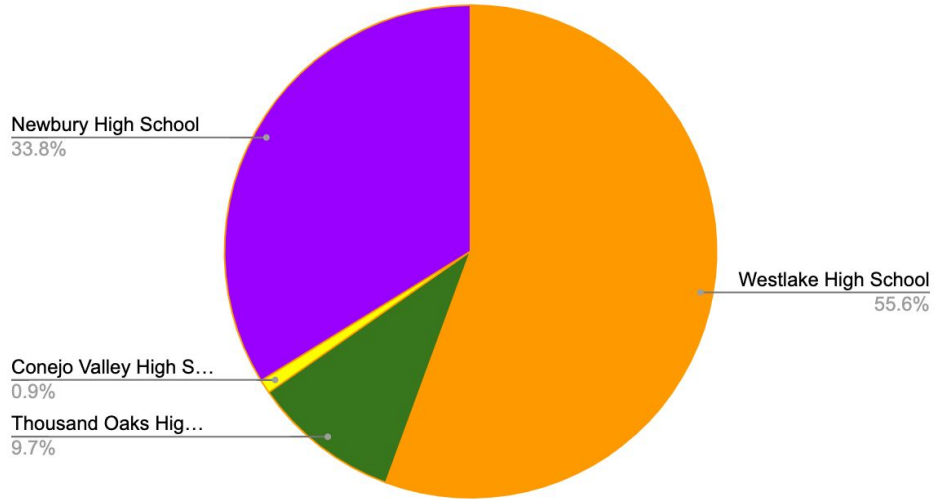
**Members: Josh Lavin, Alondra
Padilla, Michael Lindroth,
Christopher Capobianco, Adera
Craig, Catherine Xu**



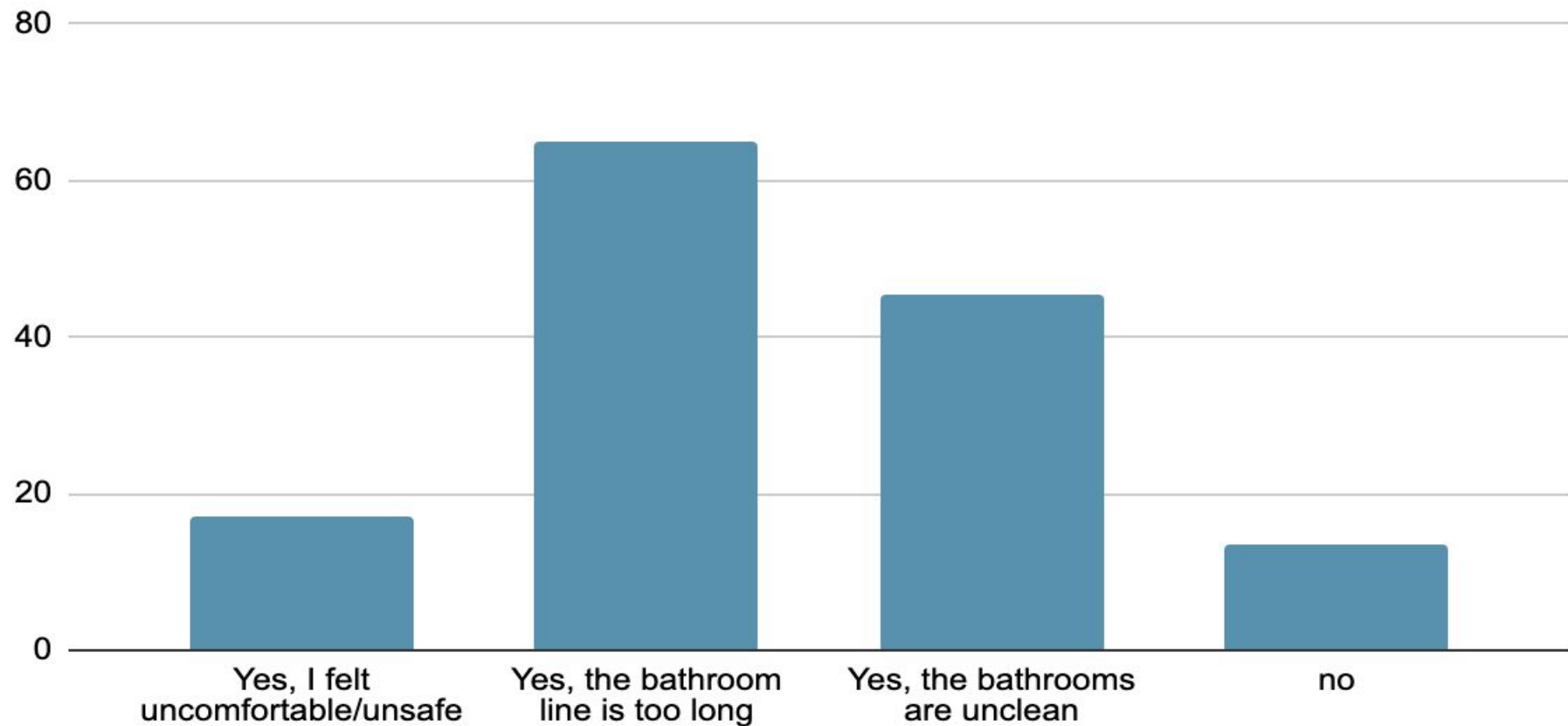
Student grade Levels Participated



High School Sites Participated



Have you ever "held it in" or deliberately not used the school bathrooms? If so why?



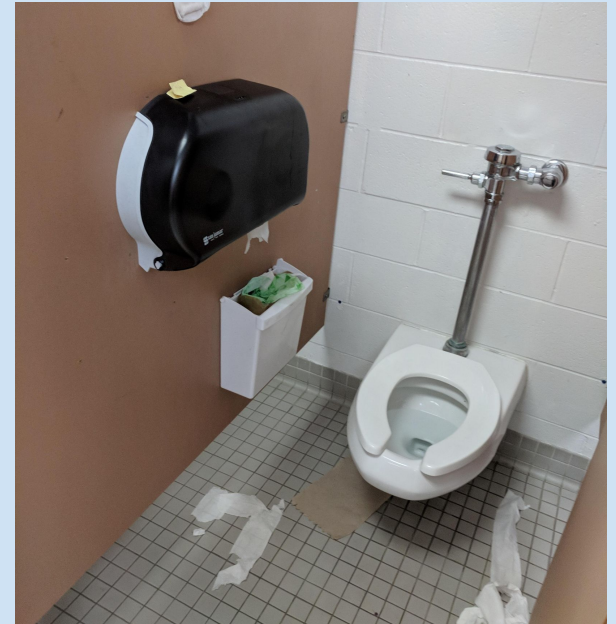
Cleanliness

Problems

- Flooded bathroom floors(Lots of complaints of floor always being wet)
- Urine/Feces on and around toilets/stalls
- Lack of soap and cleaning products in bathrooms
- Toilet paper rolls and long strands of toilet paper in toilets
And around stalls.
- Miscellaneous items in toilets
- Broken/Flooded Sinks

Solutions(Student Input)

- Cleaning twice a day (after nutrition and after school)
- Make sure there is always available soap
- Working Drains
- Stall doors that lock
- Invest in hand dryers



Accessibility

Has any of the bathrooms on your campus been locked/closed during school hours? If yes, how frequently?

Yes, 5 days a week

13.2%

Yes, 3-4 days a week

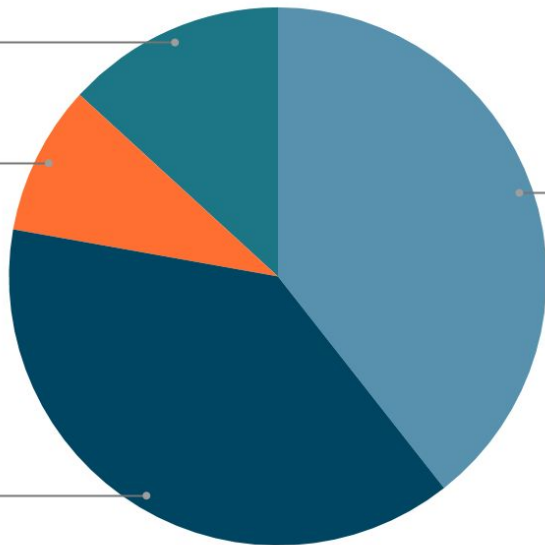
9.0%

Yes, 1-2 days a week

39.4%

No

38.4%



Background:

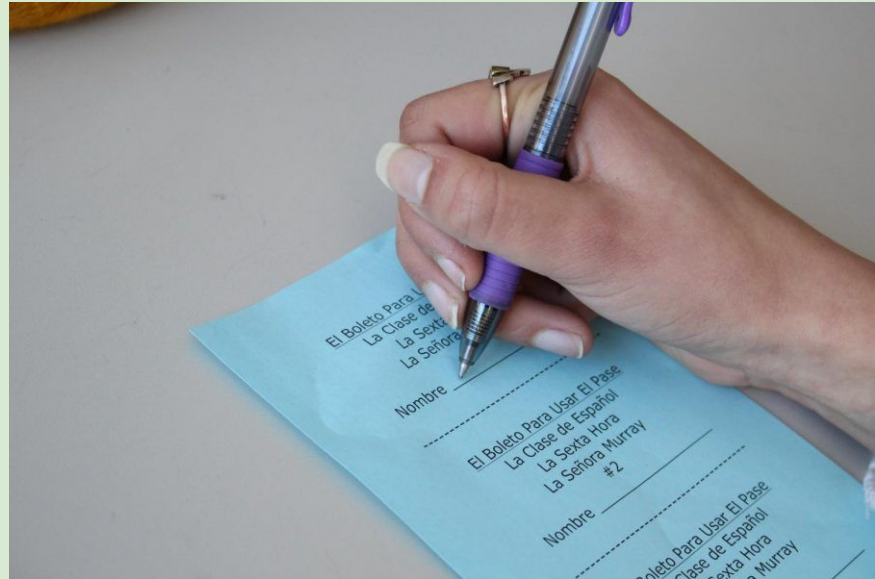
1. Student Vaping issue in bathroom stalls holds up lines and disturbs students inside.
2. Students have access to all bathroom not just one designated for the whole campus

Response:

Most bathrooms are closed off on certain days and times on campus

Solutions to be considered & enforced

- ❑ Keeping bathrooms open all school day long
 - ❑ Supervisors patrol outside but within the vicinity
 - ❑ Invasion of privacy
- ❑ Getting rid of extra credit bathroom passes (the reward system)
- ❑ Installing Vape detectors





Vape Detectors

<https://www.cnn.com/2019/09/12/health/vaping-detectors-school-trnd>

Privacy and student discomfort

<https://abcnews.go.com/GMA/video/schools-technology-prevent-bullying-vaping-49669066>

(Flysense) vape detector

https://www.youtube.com/watch?v=uAtAkn_Xl2w

Halo Smart Sensor Vape detector (stop at 2:35)

Flysense vs. Halo IOT Vape Detector



Halo #1 best seller (Most Recommended)

Flysense #2

Why Halo?

- ❑ Used and recommended by 700 school district nation wide and over 1,000 schools
- ❑ Less false alarms and more effective
- ❑ 99.9% accuracy according to the vice president of sales and marketing for the Halo manufacturer
- ❑ Looks like a smoke detector & more protective
- ❑ Stops vaping and bullying in bathrooms





Graffiti

How Graffiti Has a Negative Effect on Students

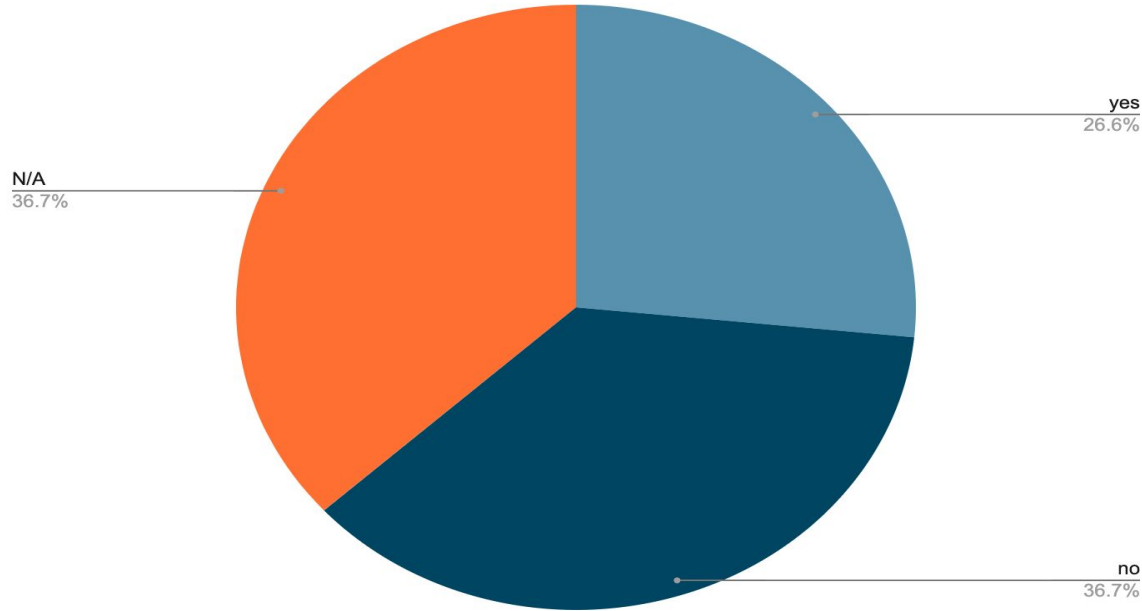
- ❑ Racial slurs or derogatory names can result in an unsafe and unwelcoming culture on campus
- ❑ Worsens the mental health of students
- ❑ Students feel unimportant, isolated and they may become unmotivated in their studies
 - ❑ Some skip school and/or class

How We Can Solve This Issue

- ❑ Painting over stalls with vulgar graffiti
- ❑ students in the committee can given the opportunity to volunteer to help paint
 - ❑ community service
- ❑ Makes our campuses safer while providing students with a way to serve their community

Female Bathroom Specific

If you are someone who menstruates, have you experienced a time at school where you did not have access to menstrual products when needed? If yes and you feel comfortable, please share your experience under "other"



Yes: (other comments)

- Leaking and leaving school
- Leaking in class with limited & not enough time to visit the health office
- Losing class time
- Not enough money/change to buy from machines
- Machines are broken
- Alternatively some use toilet paper, cardboard, birth control
- No trash cans for disposing feminine products

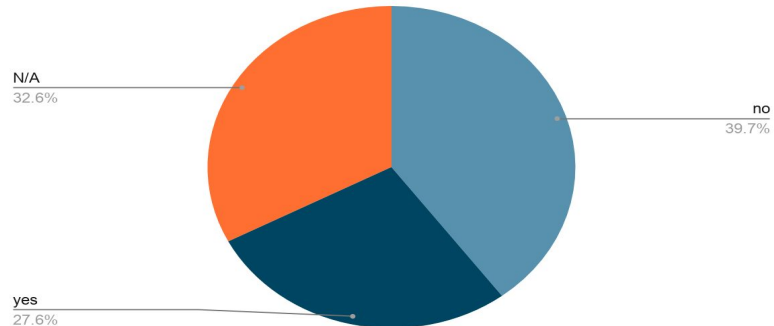
No:

- Majority accessed one from a friend

Female bathroom specific

- ❑ Accessibility to Menstrual Products based on an honor code
 - ❑ Offices are not always close by
 - ❑ Not enough time between classes
 - ❑ Causes unnecessary discomfort
- ❑ Skipped absences
- ❑ Prevents a culture of shame and embarrassment
- ❑ Add lids to trash cans & trash cans if not installed
- ❑ Many unaware and/or uncomfortable

If you are someone who menstruates, are you aware of the current system that you need to go to the health office for free



Male bathroom specific

- ❑ Consider adding dividers between urinals
 - ❑ Privacy
 - ❑ Comfort
- ❑ Stall walls should not allow space in between
 - ❑ Privacy
 - ❑ Safety



Gender Neutral Bathrooms

- ❑ Necessary for certain LGBTQ+ student population
- ❑ Accessibility
- ❑ Single Stall
 - ❑ Safety
 - ❑ Comfort

